



2013 Annual Report



Montana Nonprofit Association

Thank You

As we look back on 2013, we are thankful for the tremendous opportunity to serve our 629 nonprofit members and our 69 affiliate members and, through our work, Montana's vital nonprofit sector. You are the center of this organization. We appreciate not only the contribution you make to your communities, but also your leadership role in Montana's nonprofit sector via your membership in the Montana Nonprofit Association. We carry your voice and champion your missions in our role as advocates for the sector. We believe that you and the larger nonprofit community are essential to Montana's vitality and livability both now and in the future. Thank you for the opportunity we have to help further your mission and be of service to you as we promote a thriving and vibrant nonprofit sector in Montana.

Russell A. Cargo, Ph.D., Board Chair and Liz Moore, Executive Director

STAFF

Jim Lawrence

Membership & Resource Development Director
(406) 449-3717 ext. 103 or (406) 461-8516

Liz Moore

Executive Director
(406) 449-3717 ext. 101

Maureen Theisen

Office & Communications Manager
(406) 449-3717 ext. 100

Gail Tronstad

Training & Events Manager
(406) 449-3717 ext. 105

Suzanne Wilcox

Organizational Development Director
(406) 449-3717 ext. 102

BOARD OF DIRECTORS

Russell A. Cargo, Chair

Principal
Third Sector Services, LLC
Helena

Andrea Davis, Vice Chair

Executive Director
HomeWORD
Missoula

Mary Peterson, Secretary

Executive Director
Eagle Mount
Bozeman

Brodie Moll, Treasurer

CEO
Mission Mountain Enterprises
Ronan

Jono McKinney,

Immediate Past Chair
President-CEO
Montana Conservation Corps
Bozeman

Kelly Bruggeman

Executive Director
First Interstate Bank
Foundation
Billings

Carol Condon

Executive Director
Glendive Medical Center
Glendive

Dee Incoronato

Director of Strategy
Intermountain
Bigfork

Aidan Myhre

Owner
AM Consulting
Helena

C.B. Pearson

Senior Vice President
M+R Strategic Services
Missoula

DeeAnn Richardson

Executive Director
SAFE Harbor
Ronan

Paul Tuss

Executive Director
Bear Paw Development
Corporation
Havre

Dawn Wrigg

Manager
Rudd & Company, LLC
Helena

Membership

Nonprofits

626

Affiliates

69

Retention Rate

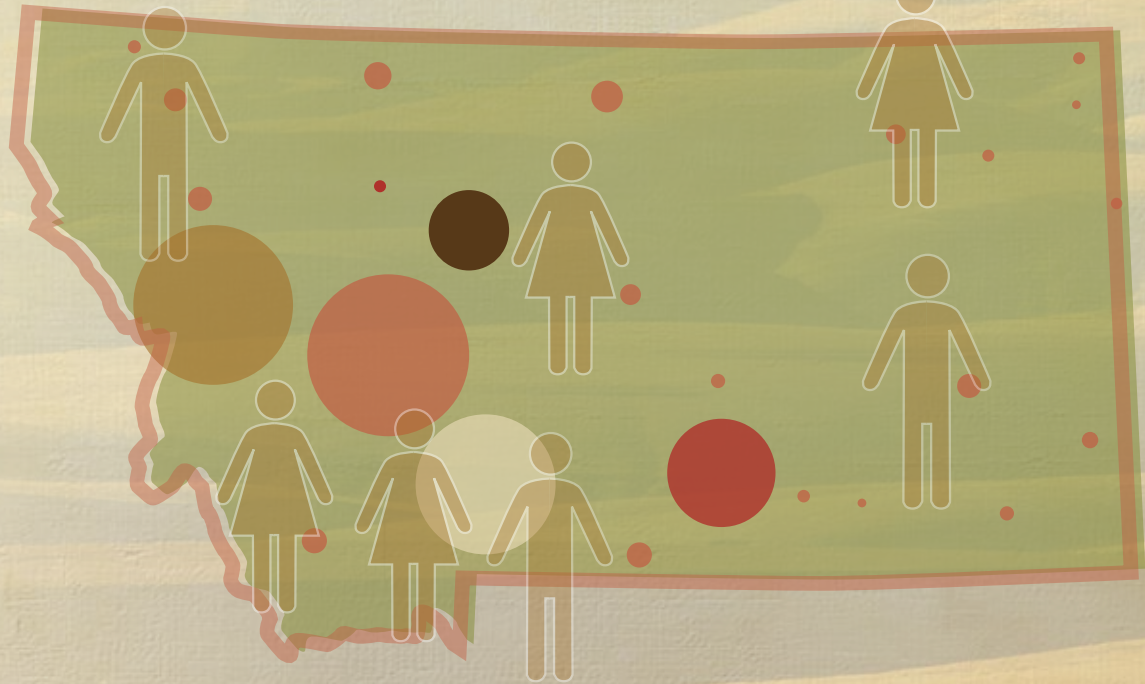
85%

New Members

83

Rural Members

36%



The percent of rural members increased by 2% over 2012 due to a focus on serving more rural areas in Montana.



MNA's overall nonprofit membership decreased by 2% in 2013, but remained at 5% above the national average among state associations.

Advocacy & Public Policy

MNA's public policy work is supported by a 16 member statewide Public Policy Council.



Hosted 120 nonprofit leaders who welcomed 280 policymakers and government staff to the 2013 Nonprofit Day at the Capitol.

Was a leader in the renewal of Montana's Charitable Endowment Tax Credit - associated with more than \$135 million in charitable giving over 15 years.

Joined in an amicus brief filed by the Attorney General's office aimed at preserving the integrity of the nonprofit corporate structure and protecting donor rights.

Informed and engaged nonprofits via ten Policy Updates, a special Transmittal Conference Call for members, and two issue focused surveys that received 148 responses, the results of which were used for advocacy at the state and national levels.

MANY MISSIONS, ONE VOICE

Professional & Organizational Development

1359 nonprofit leaders representing **552 organizations** from **110 communities** received more than **8000 aggregate hours** of *Principles and Practices for Nonprofit Excellence* training, education and technical assistance.

39%

Community Workshops

24%

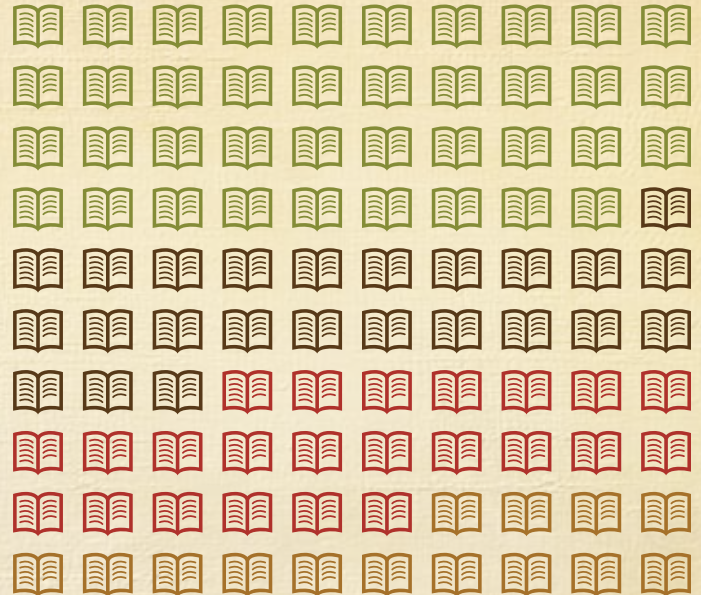
Annual Conference

23%

Webinars

14%

Technical Assistance



Developed Leading for Life, a leadership development cohort that was then piloted with 7 leaders in the Flathead Valley in partnership with the Nonprofit Development Partnership (NpDP).

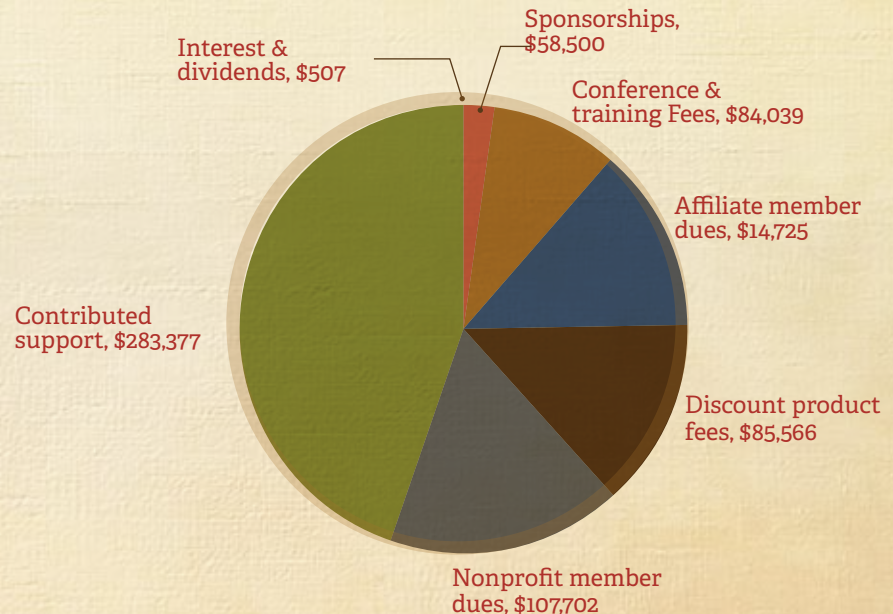
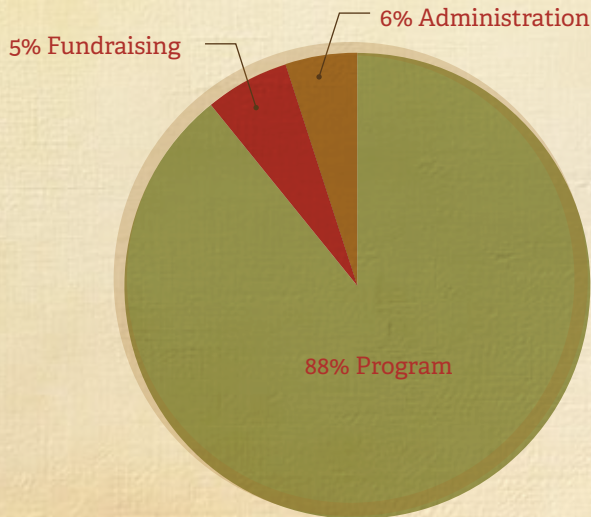
Convened network leaders from five local nonprofit networks on a monthly basis for peer support and exchange of resources and ideas.

Held MNA's inaugural Nonprofit Management Series in eastern Montana with 44 total participants from 23 nonprofit organizations.

Financials

MNA's revenue in 2013 was \$634,416, higher than the 2012 total of \$552,401. This is due primarily to the award of two multi-year grants that support MNA's professional and organizational development efforts. Operating expenses for 2013 were \$557,558, a decrease from the 2012 total of \$588,665.

89% of expenditures were used to strengthen Montana's nonprofit sector by advancing our collective voice, increasing nonprofit management and leadership capacity, generating accurate research and information about the sector and giving nonprofits access to a suite of cost-saving products. 11% of expenditures were for administration and fundraising.



Montana Nonprofit Association
Statement of Financial Position
December 31, 2013

ASSETS

CURRENT ASSETS	
Cash and cash equivalents	\$ 98,762
Accounts receivable	\$ 16,786
Grants receivable, current	\$ 180,000
Prepaid Expenses	\$ 8,488
Total current assets	\$ 304,036
PROPERTY AND EQUIPMENT	
Computers and equipment	\$ 36,717
Website	\$ 11,006
Accumulated depreciation and amortization	\$ (34,639)
Total property and equipment	\$ 13,084
OTHER ASSETS	
Investments	\$ 442
Grants receivable, long term	\$ 109,680
Total other assets	\$ 110,122
TOTAL ASSETS	\$ 427,242
LIABILITIES AND NET ASSETS	
CURRENT LIABILITIES	
Accounts payable	\$ 5,827
Accrued salaries and vacation payable	\$ 33,886
Payroll taxes payable	\$ 448
Deferred membership dues	\$ 53,538
Total current liabilities	\$ 93,699
NET ASSETS	
Unrestricted	\$ 49,322
Temporarily restricted	\$ 284,221
Total net assets	\$ 333,543
TOTAL LIABILITIES AND NET ASSETS	\$ 427,242

Montana Nonprofit Association
Statement of Activities and Changes in Net Assets
for the year ended December 31, 2013

	Unrestricted	Temporarily Restricted	Total
SUPPORT AND REVENUE			
Nonprofit member dues	\$ 107,702	\$ -	\$ 107,702
Affiliate member dues	\$ 14,725	\$ -	\$ 14,725
Sponsorships	\$ 58,500	\$ -	\$ 58,500
Discount product fees	\$ 85,566	\$ -	\$ 85,566
Conference and training fees	\$ 84,039	\$ -	\$ 84,039
Contributed Support	\$ 18,777	\$ 264,600	\$ 283,377
Interest and dividends	\$ 507	\$ -	\$ 507
Net assets released from restrictions	\$ 168,214	\$ (168,214)	\$ -
Total support and revenue	\$ 538,030	\$ 96,386	\$ 634,416
EXPENSES			
Program services	\$ 496,527	\$ -	\$ 496,527
Management and general	\$ 30,288	\$ -	\$ 30,288
Fundraising	\$ 30,743	\$ -	\$ 30,743
Total expenses	\$ 557,558	\$ -	\$ 557,558
Change in net assets	\$ (19,528)	\$ 96,386	\$ 76,858
Net assets at beginning of year	\$ 68,850	\$ 187,835	\$ 256,685
Net assets at end of year	\$ 49,322	\$ 284,221	\$ 333,543

MNA's business model is based on 60% earned income and 40% contributed. In 2013, major support came from Paul. G. Allen Family Foundation, First Interstate Bank Foundation, Montana Community Foundation, Mountain Sky Guest Ranch Foundation, M.J. Murdock Charitable Trust, O.P. & W.E. Edwards Foundation, Oro y Plata Foundation, Treacy Foundation, and Washington Foundation.

Cost Savings To Members

MNA members save almost \$900,000 on member products

Career Center

238 jobs posted are viewed 43,653 times; the savings realized by nonprofit employers is almost \$45,000 compared to other national job board services.

Unemployment Insurance

78 nonprofits covered more than 5600 employees with an unemployment insurance alternative through First Nonprofit, saving up to 50% of UI costs.

Health Insurance

Through the MNA Group Benefits Trust, 56 employers realized a 0% increase on their health costs for the 2nd consecutive year.

Grant Station

229 members save almost \$143,000 over market price on Grant Station.

Research & Information



Distributed 2013 Nonprofit Sector Report to MNA members & friends, policymakers and other partners

19,000+ visitors to MNA website



E-News list grew to 3000+; 44,000 opens in 2013 and 8056 click throughs



277 Montana nonprofits participated in 2nd Northwest Support Organization Survey

Nonprofit Members

100 Fold Studio
A Carousel for Missoula Foundation Inc.
A.W.A.R.E., Inc.
Absaroka Beartooth Wilderness Foundation
ACLU of Montana Foundation
Action for Eastern Montana
Adult Resource Alliance of Yellowstone County
Adventure Cycling Association
AERO - Alternative Energy Resources Organization
Alberta Bair Theater
Alliance for Youth, Inc.
Alpine Artisans, Inc.
Alternatives, Inc.
American Independent Business Alliance
American Indian Business Leaders
American Indian Institute
American Prairie Foundation
American Red Cross of Montana
Anaconda Community Foundation
Animal Foundation of Great Falls
Aquatic Habitat Group
Archie Bray Foundation
Area II Agency on Aging
Art Mobile of Montana
Arthritis Foundation, Montana Office
Arts Council of Big Sky
Arts Without Boundaries Foundation
Bear Paw Development Corporation
Beartooth Billings Clinic-Foundation
Beartooth Humane Alliance
Beartooth Mountain Christian Ministries
Beartooth Recreational Trails Association, Inc.
Befrienders, Inc.
Belgrade Senior Center
Belgrade Youth Forum
Benefis Health System Foundation
Bicentennial Apartments
Big Brothers Big Sisters of Butte-Silver Bow, Inc.
Big Brothers Big Sisters of Flathead County
Big Brothers Big Sisters of Gallatin County
Big Brothers Big Sisters of Great Falls

Big Brothers Big Sisters of Helena
Big Brothers Big Sisters of Park County
Big Brothers Big Sisters of Yellowstone County
Big Hole River Foundation Inc
Big Hole Watershed Committee
Big Horn Hospital Association
Big Sandy Activities
Big Sky Community Corporation
Big Sky Institute for the Advancement of Nonprofits
Big Sky Senior Services, Inc.
Big Sky Youth Empowerment Project
Big Sky Youth Training Center
Bike Walk Montana
BikeNet
Billings Amateur Hockey League
Billings Child Care Association
Billings Clinic
Billings Community Foundation
Billings Depot, Inc.
Billings Family YMCA
Billings Preservation Society
Biomimicry Institute
Bitter Root Cultural Heritage Trust
Bitter Root Resource Conservation & Development Area
Bitter Root Valley Historical Society
Bitter Root Water Forum
Bitterroot Ecological Awareness Resources - B.E.A.R.
Bitterroot Performing Arts Council
Bitterroot Therapeutic Riding
Black Rose Spiritual Center
Blackfoot Challenge
Blue Mountain Clinic, Inc.
Blue Water Task Force
Bob Marshall Wilderness Foundation Inc.
Boyd Andrew Community Services
Boys and Girls Club of Carbon County
Boys and Girls Club of Lewistown
Boys and Girls Club of Richland County
Boys and Girls Club of the Little Rockies

Boys and Girls Club of the Northern Cheyenne Nation
Boys and Girls Clubs of Yellowstone County
Bozeman Area Community Foundation
Bozeman Art Museum
Bozeman Deaconess Foundation
Bozeman Dharma Center
Bozeman Lions Foundation
Bozeman Schools Foundation
Bozeman Senior Center, Inc.
Bozeman Symphony Society
Bozeman Youth Initiative
Brain Injury Alliance of Montana
Bridgercare
Broadwater Community Health Foundation, Inc.
Buffalo Field Campaign
Burton K. Wheeler Center
Butte 4-C's
Butte Emergency Food Bank
Butte Rescue Mission
BWAM - Bike Walk Alliance for Missoula
C.A.R.E. Center
C.M. Russell Museum
Camp Mak-A-Dream
Cancer Support Community/Montana
Carbon/Stillwater Community & Senior Programs
Care Team- Office of Development
Career Futures, Inc.
Career Training Institute
Career Transitions
Carroll College
CASA of Montana
CASA-CAN Children's Advocate Network
Cascade County Law Clinic
Catholic Foundation of Eastern Montana
Center for Asbestos Disease Foundation
Center for Large Landscape Conservation
Center for Mental Health
Central Asia Institute
Central Montana Community Health Center

Central Montana Youth Mentoring Program, Inc.
Cheerful Heart, Inc.
Child Bridge, Inc.
Child Care Connections
Child Care Partnerships
Child Care Resources
Child Development Center
Children's Alliance of Montana
Children's Museum Missoula
Children's Museum of Bozeman, Inc.
Children's Museum of Montana
Citizens For A Better Flathead
Clark Fork Coalition
Clark Fork School, Inc.
Clark Fork Valley Hospital Foundation
Clearwater Resource Council
Climate Ride
Cody Dieruf Benefit Foundation
Community Action Partnership of Northwest Montana
Community Counseling and Correctional Services, Inc.
Community Foundation for a Better Bigfork
Community Mediation Center
Community Medical Center Foundation
Community Option Resources Enterprises, Inc.
Community Seven Television
Compassion Tanzania
Conrad Mansion Museum
Conservation Congress
Cooperative Health Center Inc.
Cottonwood Commons Transition Home
Court Appointed Special Advocates of Missoula - CASA
Custer County Community Health Center
Custer County Community Table
Custer County Historical Society
Custer Network Against Domestic Abuse
Cut Bank Education Foundation & Alumni Association
Dawson College Foundation
Dawson County Domestic Violence Program
Dawson County Healthy Communities Coalition
Dayton Proctor Park Association
Deep Bay Center
Developmental Educational Assistance Program
Disability Rights Montana

District IV HRDC
Dolce Canto, Inc.
Domestic and Sexual Violence Services of Carbon County
Dream Adaptive Recreation, Inc.
Dress for Success Billings
Eagle Mount Billings
Eagle Mount Bozeman
Easter Seals-Goodwill Northern Rocky Mountain, Inc.
Eastern Montana CASA-GAL Inc.
Eastern Montana Industries
Ecology Project International
Education Foundation for Billings Public Schools
Eleanore's Project
Emerson Center for the Arts and Culture
Emma's House
Energy Share of Montana
Ennis Community Children's School
Evergreen Kids Corner
EWAM
ExplorationWorks!
Family Connections
Family Promise of Gallatin Valley, Inc.
Family Promise of Great Falls, Inc.
Family Promise of Greater Helena
Family Promise of Missoula
Family Promise of Yellowstone Valley
Family Service, Inc.
Family Support Network
Family Tree Center
Fifth Judicial District Voice for Children
First Judicial District CASA-GAL Program Inc.
Fitch Foundation
Flathead CARE
Flathead Community Foundation
Flathead County Library Foundation
Flathead Economic Policy Center
Flathead Food Bank, Inc.
Flathead Lakers
Flathead Land Trust
Flathead Valley Community College Foundation, Inc.
Florence Crittenton Home & Services
Forsyth Health and Recreation Advocates
Forward MT Foundation

Foundation for Community Care
Foundation for Community Vitality
Friends of Dornix Park
Friends of Pompeys Pillar
Friends of the Hobson Library
Friends of the Library (Livingston)
Friends of the Whitehall Community Library
Friendship Center of Helena, Inc.
Friendship House of Christian Service
Front Range CASA/GAL
Future West, Inc.
Gallatin County Love in the Name of Christ
Gallatin Fairgrounds Foundation
Gallatin Ice Foundation
Gallatin Valley Farm to School
Gallatin Valley Land Trust
Gallatin Valley YMCA
Garden City Harvest
Gateway to Glacier Trail
Gianforte Family Foundation
Girl Scouts of Montana and Wyoming
Glacier Community Health Center, Inc.
Glacier County Historical Museum
Glacier National Park Conservancy
Glacier Symphony & Chorale
Glendive Medical Center Foundation
Glen-Wood, Inc.
Global Health Equity Foundation
Global Village, Inc.
Global Wildlife Resources, Inc.
Good Samaritan Ministries Thrift Store
Grandstreet Theatre
Great Beginnings Montessori School
Great Burn Study Group
Great Falls Senior Citizen's Center
Great Falls Symphony Association
Greater Gallatin United Way
Greater Gallatin Watershed Council
Greater Glendive Community Foundation
Greater Missoula Family YMCA
Greater Montana Foundation
Greater Polson Community Foundation
Greater Yellowstone Coalition
Grizzly & Wolf Discovery Center

Habitat for Humanity Mid-Yellowstone Valley	Intermountain Children's Home and Services	March of Dimes
Habitat for Humanity of Gallatin County	International Choral Festival of Missoula	Maternal Life International
Habitat for Humanity of Missoula	International Organic Inspectors Association	McLaughlin Research Institute for Biomedical Sciences
Hamilton Players, Inc.	Invasive Species Action Network	MEHMKKE Steam Tractor Museum
Hand Me Down Some Silver	IQRA Fund	Messengers for Health
Hands Up Foundation	Jack Creek Preserve Foundation	Miles City Community College Endowment
Haven	Jerry Metcalf Foundation	Milk River Inc.
Haynes Foundation	Job Connection, Inc.	Mineral County Community Foundation
Hays Community Development Corporation	Jwalan Muktika School for Illumination	Mission Mountain Enterprises, Inc
Healthy Mothers Healthy Babies, The Montana Coalition, Inc.	Kalispell Education Foundation	Missoula Aging Services
Heart of Montana Canine Center	L.P. & Teresa Anderson Foundation	Missoula Art Museum
Heart of the Valley Inc.	Lake County CDC	Missoula Butterfly House and Insectarium
Hearts and Homes Family Resource Center	Landon's Lookout	Missoula Children's Theatre
Helena Area Community Foundation	Last Chance Nordic Ski Club	Missoula Community Access Television Inc.
Helena Area Habitat for Humanity	Last Chance Public Radio Association, Inc.	Missoula Community Foundation
Helena Civic TV	Last Chance Tennis Association	Missoula Community School
Helena Community Gardens	LaVie: An Early Pregnancy Clinic	Missoula Cultural Council
Helena Education Foundation	Leadership Montana	Missoula Developmental Service Corporation
Helena Family YMCA	Lewis & Clark Humane Society	Missoula Food Bank
Helena Food Share	Lewis and Clark Library Foundation	Missoula Housing Authority
Helena Indian Alliance	Lewis and Clark Literacy Council	Missoula Indian Center
Helena Industries, Inc.	Lewis and Clark Trail Heritage Foundation	Missoula Interfaith Collaborative
Helena Symphony Society	Lewistown Art Center	Missoula International School
Helena Tourism Alliance	Lewistown Job Service Employers Committee	Missoula Manor Homes
Help Center, Inc.	Life Skills Fore Montana Youth, Inc.	Missoula Ravalli Transportation Management Association, Inc.
HELP Committee and Boys and Girls Club of the Hi-line	LIFTT, Inc.	Missoula Senior Citizens Center Association
Hi-Line Home Programs	Lighthouse Christian Home & Services, Inc	Missoula Writing Collaborative
Hi-Line Women Against Breast Cancer	Lincoln County Transportation Service, Inc.	MonDak Historical & Arts Society
Hockaday Museum of Art	Literacy Bitterroot	Montana 4-H Foundation
Holter Museum of Art	Literacy Center of NW Montana	Montana A Cappella Society
Home ReSource	Live! at the Civic	Montana Aquatic Resources Services, Inc.
Homeward, Inc.	Living Art of Montana	Montana Arts Council
Hopa Mountain, Inc.	Livingston Food Arts Pantry	Montana Association for the Blind
Hospice Care Foundation	Livingston Healthcare Foundation	Montana Association of Churches
HRDC 7	Livingston Youth Soccer Association	Montana Audubon
Human Resource Development Council District IX	Loyola Sacred Heart Foundation	Montana Budget and Policy Center
Humane Society of NW Montana	Luccock Park Methodist Camp Association	Montana Celiac Society
Humanities Montana	Madison County Archives, Thompson-Hickman Library	Montana Chamber Foundation, Inc.
Impact on Learning, Inc.	Madison River Foundation, Inc.	Montana Child Care Resource & Referral Network
Indian Family Health Clinic	MAI WAH Society	Montana Coalition Against Domestic & Sexual Violence
Indian Law Resource Center	Malta Opportunities, Inc.	Montana Community Development Corporation
	MAPS Media Institute	Montana Community Finance Corporation

Montana Community Foundation, Inc.
 Montana Conservation Corps
 Montana Council of Teachers of Mathematics
 Montana Council on Developmental Disabilities
 Montana Council on Economic Education
 Montana Cowboy Poetry Gathering
 Montana Creativity Quest - Montana Destination
 Imagination
 Montana Credit Unions for Community Development
 Montana Economic Developers Association
 Montana Economic Revitalization &
 Development Institute
 Montana Environmental Education Association
 Montana Environmental Information Center
 Montana Farm Bureau Foundation
 Montana Federation of Garden Clubs, Inc.
 Montana FFA Foundation Incorporated
 Montana Food Bank Network
 Montana Healthcare Foundation
 Montana Herb Gathering
 Montana History Foundation
 Montana Horse Sanctuary
 Montana Horse Welfare Council
 Montana Innocence Project
 Montana Justice Foundation
 Montana Land Reliance
 Montana Learning Center
 Montana Legal Services Association
 Montana Library Association, Inc.
 Montana Meth Project
 Montana Natural History Center
 Montana Natural Resources Youth Camp, Inc.
 Montana Neuroscience Institute Foundation
 Montana Operation Lifesaver, Inc.
 Montana Oral Health Foundation
 Montana Outdoor Science School
 Montana Police Protective Association Foundation
 Montana Post Secondary Educational
 Opportunities Council
 Montana Preservation Alliance
 Montana Professional Teaching Foundation
 Montana Project Healing Waters Fly Fishing, Inc.
 Montana PTA

Montana Public Health Association
 Montana Renewable Energy Association
 Montana Rescue Mission
 Montana Section of the American Water
 Works Association
 Montana Shares
 Montana State University- Northern Foundation
 Montana Supporting Soldiers
 Montana Tech Foundation
 Montana TheatreWorks
 Montana Veterans Foundation
 Montana Watershed Coordination Council
 Montana Wilderness Association
 Montana Wildlife Federation
 Montana Youth Soccer Association
 Montana's Outdoor Legacy Foundation
 Montanical Garden
 Mothers' Milk Bank of Montana
 Mountain View Social Development Center
 MSU Billings Foundation
 MusEco Media and Education Project
 Museum of the Rockies, Inc.
 Musikanten Montana
 Musselshell Valley Community Foundation
 Myrna Loy Center for Performing and Media Arts
 NAMI - Billings
 NARAL Pro-Choice Montana Foundation
 National Alliance on Mental Illness of Montana
 National Center for Appropriate Technology - N.C.A.T.
 National Indigenous Women's Resource Center, Inc.
 National Institute on Money in State Politics
 National Museum of Forest Service History, Inc.
 Native American Community
 Development Corporation
 NC Foundation
 Neighbor To Neighbor
 NeighborWorks
 Nerdy Girls, Inc.
 Nkwusm
 North Central Area Agency on Aging
 North Central Independent Living Services
 North Lake County Library Foundation
 North Valley Hospital Foundation

Northeast Montana Health Services
 Charitable Foundation
 Northern Plains Resource Council
 Northwest Connections - Environmental and
 Cultural Resource Center
 Northwest Montana United Way, Inc.
 NOVA Center for the Performing Arts
 NW Montana Head Start
 Old Trail Museum
 One Montana
 Oneness Project
 Open Aid Alliance
 Opportunities, Inc.
 Opportunity Link, Inc.
 Opportunity Resources, Inc.
 Organic Advisory & Education Council
 Original Governors Mansion Restoration Society
 Our Montana, Inc.
 Outdoor Writers Association of America, Inc.
 Owl Research Institute
 Parents Let's Unite for Kids - PLUK
 Paris Gibson Square, Inc.
 Park County Senior Citizens Center
 Parmly Billings Library Foundation
 Peers Unlimited
 Piegan Institute, Inc.
 Plains Justice
 Planned Parenthood of Montana
 Polar Bears International
 Polar Oceans Research Group
 Potomac Greenough Community Center
 Poverello Center, Inc.
 Powder River Farm in the Dell
 Pregnancy Outreach Clinic
 Prickly Pear Land Trust
 Pride Foundation
 Project WET Foundation
 Public Land/Water Access Assn.
 R E A D I Workforce Training Systems, Inc.
 Ranchers Stewardship Alliance
 Range Riders Museum
 Ravalli County Council on Aging
 Ravalli Services Corporation

Reach Out & Care Wheels, Inc.
Reach, Inc.
Red Lodge Area Community Foundation
Red Willow Learning Center
Relational Wisdom 360
Residential Support Services
Resource, Support and Development, Inc.
Richland Opportunities, Inc.
River City Harvest, Inc.
RiverStone Health Foundation
Roberts Community Foundation
Rocky Mountain Development Council
Rocky Mountain Elk Foundation
Rocky Mountain Front Weed Roundtable
Ronald McDonald House Charities of Montana, Inc.
Roxy Theater
Ruby Habitat Foundation
Ruby Valley Hospital Foundation
Run Wild Missoula
Rural Dynamics, Inc.
Rural Employment Opportunities, Inc.
S.A.V.E. Student Advocates for Valuing the Environment
SAFE - Supporters of Abuse Free Environments, Inc
SAFE Harbor, Inc.
Salish Kootenai College Foundation
Sanders County Coalition For Families
Sanders County Community Development Corporation
Seeley Lake Community Foundation
Seeley Lake Regional Center for Kinetic Sports
Selway-Bitterroot Foundation
Service Animals for You
Sheridan Health Care Foundation
Shift Empowerment Programs
Silver Bow Art
Silver Run Skiing Foundation
Sixth Judicial District CASA GAL
Smelter City Family Development
Snowy Mountain Development Corporation
Soil and Water Conservation Districts of MT, Inc.
Soulshine Foundation
South Central Montana Regional Mental Health Center
Southwestern Montana Family YMCA
Special K. Ranch, Inc.

Special Olympics Montana
Spirit at Play Early Child Program
Splashes of Joy
Spring Meadow Resources
St. John's Lutheran Ministries
St. Labre Indian School Educational Association
St. Luke Community Healthcare Foundation
St. Peter's Hospital Foundation
St. Regis Senior Citizens Center
St. Vincent De Paul Society
Stafford Animal Shelter
STEP, Inc.
Stillwater Historical Society & Museum
of the Beartooths
Student Assistance Foundation
Students Abroad: Missoula
Sun River Watershed
Sunburst Community Service Foundation Inc.
Sunburst Unlimited, Inc.
Sunrise Women's Clinic
Sustainable Business Council
Swan Valley Community Foundation
Swan View Coalition
Sweet Grass Artists' Alliance, Inc.
Sweet Grass Health and Wellness Foundation
Sweetgrass Development, EDD
Tamarack Grief Resource Center
TangoHelena
TAP 365
Teller Wildlife Refuge
Teton Medical Center Foundation
The Cinnabar Foundation
The Confluence Center
The Foundation for Animals
The Foundation for the Diocese of Helena
The Little Children's Home, Inc.
The Nurturing Center, Inc.
The Parenting Place
The People's Partners for Community Development
The Refugee Center Online
The Sacred Portion Children's Outreach
The Salish Institute
The Samaritan House, Inc.

The Station Foundation
The Traveling School
The University of Montana Foundation
THRIVE
Tibetan Language Institute
Tobacco Valley Food Pantry and Thrift Store
Travelers' Rest Preservation & Heritage Association
Treacy Foundation
Tri-County Network Against Domestic and
Sexual Violence
Trout Conservancy of Montana
Tumbleweed Runaway Program, Inc.
Turning the Wheel
Twin Bridges Senior & Community Center, Inc.
Two Rivers Economic Growth, Inc.
United Way of Cascade County
United Way of Hill County
United Way of Missoula County
United Way of the Lewis & Clark Area
United Way of Yellowstone County Inc.
University of Montana Western Foundation
Upper Swan Valley Historical Society, Inc.
Valley County Community Foundation
Valley Veterans Service Center
Verge Theater
Victim-Witness Assistance Services Inc.
Violence Free Crisis Line, Inc.
Vision Beyond Borders
Vital Ground Foundation
Voices of Hope
Watershed Education Network
WaterWorks Art Museum
Watson Children's Shelter, Inc.
West Mont
West Yellowstone Foundation
Western Heritage Center
Western Montana Area VI Agency on Aging
Western Montana Chapter for the Prevention of
Elder Abuse
Western Native Voice
Western Sustainability Exchange
Whitefish Community Foundation
Whitefish Lake Institute

Whitefish Legacy Partners
Whitefish Theatre Co.
Wild Rockies Field Institute
Wild Skies Raptor Center, Inc.
Wilderness Watch, Inc.
Windhorse Equine Learning
Women In Action
Women's Opportunity Resource - W.O.R.D.
Women's Resource Community Support Center
Women's Voices For The Earth
Wood For Haiti
Working Dogs for Conservation Foundation
WorkSafeMT
World Montana
Writing Coaches of Missoula
WW Idea, Inc.
YAKIN
Yellowstone AIDS Project Inc.
Yellowstone Art Museum
Yellowstone Association Yellowstone National Park
Yellowstone Ballet Company
Yellowstone Boys and Girls Ranch Foundation
Yellowstone Business Partnership
Yellowstone CASA
Yellowstone Club Community Foundation
Yellowstone Conference United Methodist Foundation
Yellowstone Ecological Research Center
Yellowstone Historic Center
Yellowstone Park Foundation
Yellowstone River Parks Association Inc.
Yellowstone Valley Animal Shelter
Yellowstone Wildlife Sanctuary
Young Families Early Head Start, Inc.
Young Parents' Education Center, Inc.
Youth Connections
Youth Dynamics, Inc.

Youth Homes, Inc.
Youth Image Project
YWCA Billings
YWCA Helena
YWCA Missoula
YWCA of Billings Endowment Foundation
YWCA of Great Falls / Mercy Home
ZooMontana
Zootown Arts Community Center



Affiliate Members

5th House Consulting
Allegra Marketing Print and Web
ALPS Foundation Services
AM Consulting
Anderson ZurMuehlen
Arthur M. Blank Family Foundation
Ascent Strategic Development
Associated Employers
Bancserve/Healthserve
Betty Vail
Big Sky Commerce
Blue Cross Blue Shield of Montana
Cadence, Inc.
Carol Bronson
Catherine (Kitty) Wright
Chany Reon Ockert Consulting, LLC
Colette Bernica
Columbus Community Foundation
Community Foundation of Northern Rosebud County
Debbie Richert
Department of Labor & Industry
Destination Missoula
Dorcie Dvarishkis
Downtown Helena BID
Extension Service Montana State University
Ferrone Associates
First Call Computer Solutions
First Interstate Bancsystem Foundation
First Nonprofit Companies
Foundant Technologies
Frontline Processing Corporation
Gallatin County DUI Task Force
Galusha, Higgins & Galusha, Billings

Galusha, Higgins, & Galusha, Missoula
Governor's Office of Community Service
Heather Willis
Jefferson Local Development Corporation
Jefferson Valley Community Foundation
Jessica Karjala
Junkermier, Clark, Campanella, Stevens PC
Karin Clark-Cassens
Kathleen Wright
Kathy Ruff
Kerri Brown
Kit Gillem - Murdock Trust
Kool Kids Childcare
Lisa Flowers
Liz Moore
Magpie Consulting
Maria Mantas
Majken Mechling
Missoula County Weed District & Extension
Montana Beer & Wine Distributors Association
Montana Conservation Voters
Montana Correctional Enterprises
Montana Historical Society
Montana Public Radio
Montana State University- Northern
Montana's Glacier Country
Mountain West Benefits
MRG Financial Services, PLLC
MSU Office of Activities and Engagement
Nancy Zadick
Nikki Sandve
O.P. & W.E. Edwards Foundation
Open Sky Consulting

Park Side Credit Union
PayneWest Insurance
Peyton Huffman
Phil and Pat Grimm
PPL Montana, LLC
PSIA-NRM
Randall Knowles
Redwater Community Foundation
Ruthann Knudson
Sage Solutions Nonprofit Consulting, LLC
Sherry Meador
Sue Talbot
Third Sector Consulting Group, LLC
Third Sector Services
Tom McElwain
Trister, Ross, Schadler & Gold, PLLC
Turner and Associates
UM Office for Civic Engagement
Wayne H. Turner, LLC



Montana Nonprofit Association

P.O. Box 1744
Helena, MT 59624
mtnonprofit.org

Concept & Design by: Soul Creative